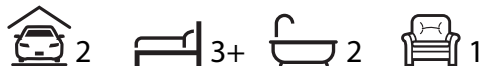




This home captures both classic and modern design elements. Two main pavilions wrapped in traditional board and batten cladding, louvre detailed gables and a stone finish chimney, gives this home real character. The full height glazing, minimal overhang and chimney cap, bring this home into modern territory. The layout makes the most of the natural sun path and provides dual outdoor living options. Other features include a separate office, a separate master, a scullery and plenty of storage. If you're looking for a plan that feels like home, this is it!



Floor Area: 222m<sup>2</sup>



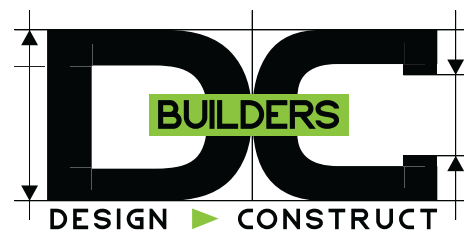
21.6m 16.5m

contact Melvin:

Ph: 022 432 8135

E: melvin@designconstruct.co.nz

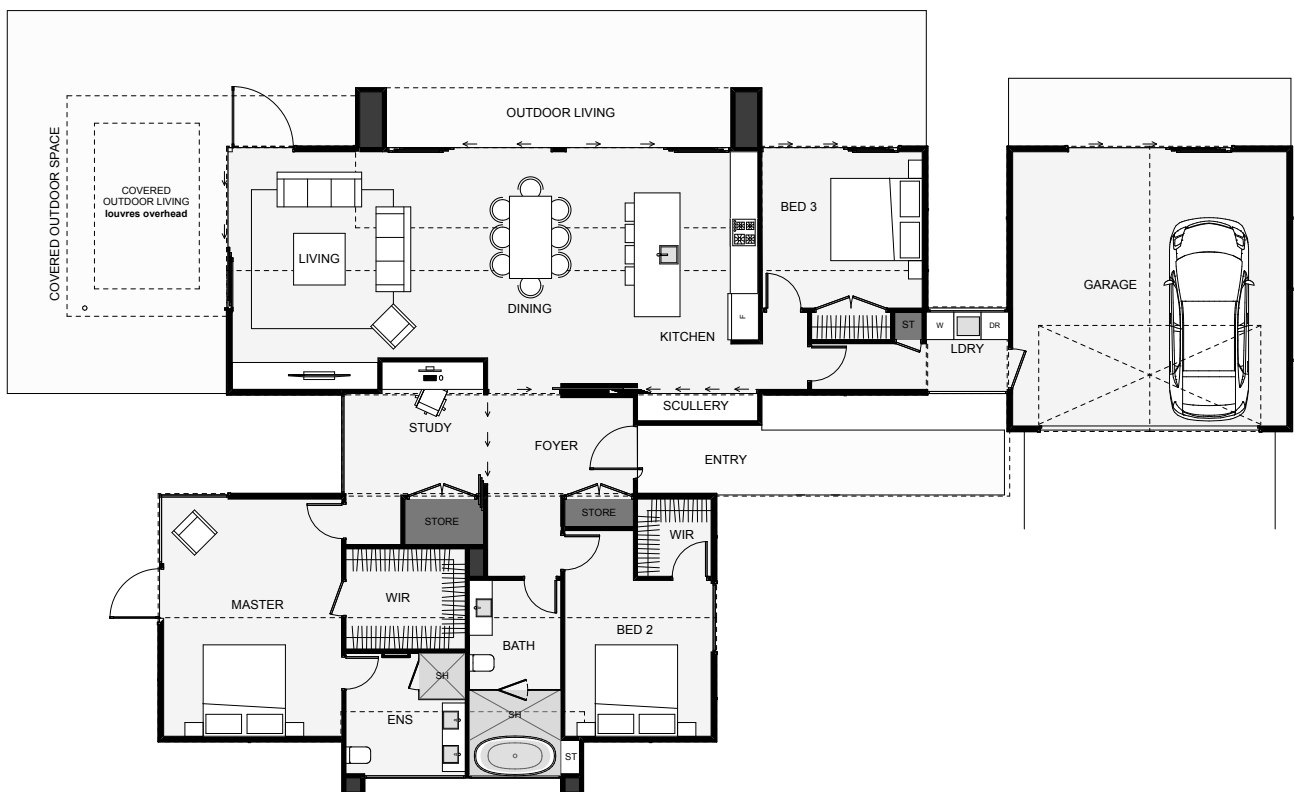
[www.designconstruct.co.nz](http://www.designconstruct.co.nz)







Classic gable ends with louvre detailing and modern concrete extrusions are just the start of this architectural home. Timber weatherboards split by vertical battens gives the classic weatherboard cladding a more sophisticated look. Inside, minimum hallways are used to save on space and rooms are positioned to make use of the natural sunlight path. Some features include the open study with close-off doors, the integrated scullery, the back to back bathrooms and the covered outdoor living space, positioned for midday to evening light. This home makes a great family home that may just stand the test of time.



Floor Area: 212m<sup>2</sup>



Ph: 022 432 8135  
E: melvin@designconstruct.co.nz  
[www.designconstruct.co.nz](http://www.designconstruct.co.nz)

